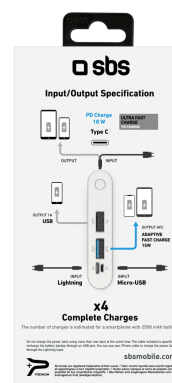




Power bank PD Charge from 10000 mAh

SKU: TTBB100003UPDLCDK



Power Bank Polymer, 10.000 mAh 1 output USB 1 A, 1 output USB Adaptive Fast Charge, 1 Type-C PD 18W input/output, 1 lightning input

A NEW CONCEPT IN RECHARGING

Charge your devices like you've never done before with the **10000 mAh Power Bank PD Charge**.

This charger is a powerhouse of innovation, designed to charge devices that support different connectors: USB, Micro USB, Type-C and Lightning.

SIMULTANEOUS RECHARGING

This powerbank boasts a **Dual Charge** system, which will allow you to simultaneously charge your devices while the portable charger itself is charging.

The charger has been designed with an input/output configuration aimed at ensuring **maximum flexibility of use**: it can actually be powered through the various Micro-USB, Lightning and Type-C ports and can simultaneously charge devices via USB, USB Adaptive Fast Charge and Type-C ports.

TECHNOLOGY AT YOUR SERVICE

The Type-C port is characterized by PD (**Power Delivery**) technology. This innovative system allows compatible smartphones and tablets to be recharged with power up to 18W, ensuring ultra fast charging, like the new iPhones.

The USB port distinguished by the blue colour, it allows compatible devices to receive up to 15W of power and a fast power supply thanks to the **Adaptive Fast Charge** energy transfer protocol.

The Powerbank is certified **Intelligent Charge**: this portable charger automatically recognizes the maximum charging power absorbable by the device and adjusts it accordingly, providing, in complete safety, the maximum recharge in the shortest possible time.

COMFORT AT YOUR SIDE

Thanks to the useful **LCD display** you will always have control over the percentage of power present in your portable charger. In the box you will also find a USB – micro USB charging cable to charge the Powerbank: use it to deal with any situation.

FEATURES:

- Capacity: 10000 mAh
- Dual Charge
- Intelligent Charge
- Power Delivery Charge
- Input: Micro USB, Type-C, Lightning
- Output: USB, USB Adaptive Fast Charge, Type-C
- LCD Display
- Lithium polymer battery
- Smartphone charge level after 30 minutes with Type-C PD Charge: 70% *
- USB – micro USB charging cable included

* Charging times are approximate and depend on the battery capacity of the recharged device.



Power bank PD Charge from 10000 mAh
SKU: TTBB100003UPDLCDK

Technical data

Recharging cable: USB/Micro-USB
Input: 5V - 2A Lightning, 5V - 2A Micro USB, PD 18 W - Type C
Output: 5V - 1A USB, 5V - 3A/9V - 1.67A Max USB 2, PD 18 W - Type C
Battery: Lithium polymer battery
Technology: Adaptive Fast Charge, Dual Charge, Intelligent Charge, Power Delivery 18 W
USB Output: 5V - 1A
Type C Input: PD 18 W
USB 2 Output: 5V - 3A/9V - 1.67A Max
Charging type: Ultra-fast
Type C output: PD 18W
Lightning Input: 5V - 2A
Micro USB Input: 5V - 2A
Finishing/Feature: LCD screen
Included accessories: Charging cable
Color: white
EAN: 8018417253652
SKU: TTBB100003UPDLCDK
Weight: 222 g

Logistics data

Depth Pack: 30 mm
Width Pack: 90 mm
Depth Inner: 220 mm
Height Pack: 200 mm
Weight Pack: 300 g
Width Inner: 90 mm
Amount Inner: 2
Depth Master: 460 mm
Height Inner: 120 mm
Weight Inner: 640 g
Width Master: 280 mm
Amount Master: 24
Height Master: 260 mm
Weight Master: 8180 g

