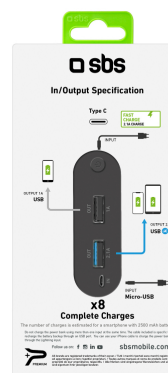




20000 mAh Power Bank Type-C port

SKU: TTBB200003UFLCDK



20,000 mAh Battery charger, Dual Charge, Intelligent Charge, 2 ports USB - 1A and 2.1 A and Micro USB and Type-C ports, black

WHAT IS IT?

The **20,000 mAh Power Bank** is a **multi-port battery charger** that enables you to recharge your smartphone and tablet at the same time whenever you like.

The external battery guarantees maximum flexibility of use thanks to its Micro USB and Type-C ports.

VERSATILE

When the powerbank is empty, you have three ways to recharge it. In fact, you can use the cable included in the pack to charge it using the Micro USB port.

The charger also supports 1 **Type-C** port, enabling you to also use a cable with this type of connector to fully charge your power bank.

TECHNOLOGY AT YOUR FINGERTIPS

The 1A and 2.1A USB ports enable you to recharge two devices simultaneously.

The **Dual Charge** system will also allow you to charge smartphones and tablets at the same time as the power bank itself is recharging. The exact percentage of charge remaining inside the charger will be shown on the **LCD display** – an easy way to know when it's time to recharge the powerbank.

QUICK RECHARGE

The **Intelligent Charge** technology allows this portable battery to automatically recognise how much charging power your device can absorb, and adjust accordingly. In this way it provides maximum recharge in the shortest possible time.

The 2.1 Ampere USB port in fact enables you to reach **50%** of device charge in just 30 minutes.

WITH YOU IN THE AIR

This Power Bank is the perfect travel companion as its petite size allows you to store it anywhere, and there are **no restrictions on its transportation by air**.

FEATURES:

- 20,000 mAh Capacity
- Dual Charge
- Intelligent Charge
- 2 USB ports – 1A and 2.1 A – to per recharge smartphones or tablets
- 2 Type-C and Micro USB ports to recharge the powerbank
- USB - Micro USB charging cable included
- Smartphone charge level after 30 minutes using 2.1A: 50%*
- LCD Display
- Lithium polymer battery
- Suitable for air transport

*Charging times are approximate and depend on the battery capacity of the device being recharged.



20000 mAh Power Bank Type-C port
SKU: TTBB200003UFLCDK

Technical data

Recharging cable: USB/Micro-USB
Input: 5V - 2A Micro USB, 5V - 2A Type C
Output: 5V - 1A USB, 5V - 2.1A USB 2
Battery: Lithium polymer battery
Technology: Dual Charge, Intelligent Charge
USB Output: 5V - 1A
Type C Input: 5V - 2A
USB 2 Output: 5V - 2.1A
Charging type: Fast
Micro USB Input: 5V - 2A
Finishing/Feature: LCD screen
Included accessories: Charging cable
Color: black
EAN: 8018417253621
SKU: TTBB200003UFLCDK
Weight: 436 g

Logistics data

Depth Pack: 30 mm
Width Pack: 90 mm
Depth Inner: 210 mm
Height Pack: 180 mm
Weight Pack: 500 g
Width Inner: 100 mm
Amount Inner: 2
Depth Master: 440 mm
Height Inner: 110 mm
Weight Inner: 1035 g
Width Master: 310 mm
Amount Master: 24
Height Master: 250 mm
Weight Master: 13000 g

